

Installing, running, and updating Eclipse



eclipse

© 2004 IBM Corporation.

Agenda

- Eclipse's simple install process
- Running Eclipse
- Processing updates to Eclipse

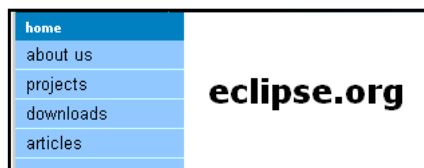
Installing Eclipse



 eclipse

© 2004 IBM Corporation.

Installing Eclipse



- To get started, go to **eclipse.org** and click the downloads link.

Installing Eclipse

- Download the **Eclipse SDK**.
 - Currently the file name is `eclipse-SDK-3.0.1-win32.zip` (for Windows, anyway)
 - This file contains everything from Eclipse, including the Eclipse platform and the SDK.
 - Download the file (use a mirror if you can) and unzip it. You're done!

Other things at Eclipse

- The Eclipse SDK download gives you everything you'll need to get started. There are other packages you might want to look at, though:
 - FTP and WebDAV support
 - Plug-in development environment (PDE)
 - Rich Client Platform runtime and SDK

The Java Runtime Environment

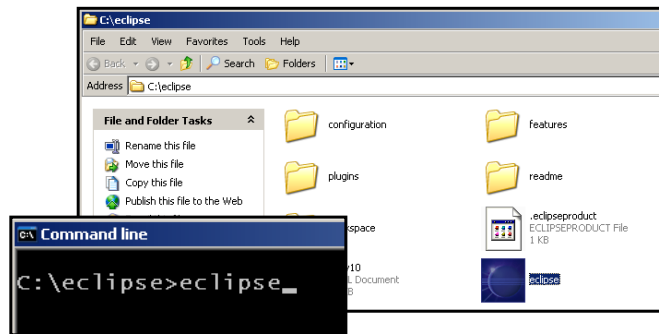
- Because Eclipse is written in Java, you have to have a Java Runtime Environment (JRE) on your machine.
 - A JRE isn't included with Eclipse itself.
- **eclipse.org** lists sites with JREs available if you need one.
- I use Sun's JRE 1.4.2_04-b05 on my machine. Java 5 (Tiger) seems to work as well...

Running Eclipse

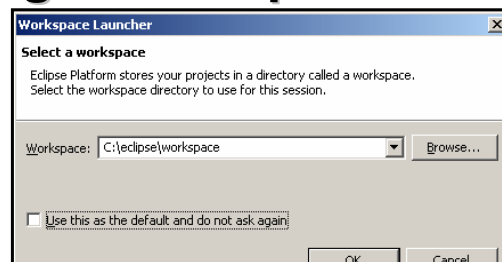


Running Eclipse

- Now that you've installed Eclipse, running it is as simple as running the **eclipse** command:



Choosing a workspace

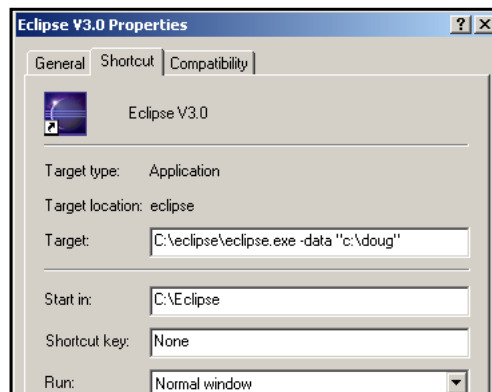


- As mentioned earlier, the first time you run Eclipse you'll be asked to choose a workspace.

Different workspaces

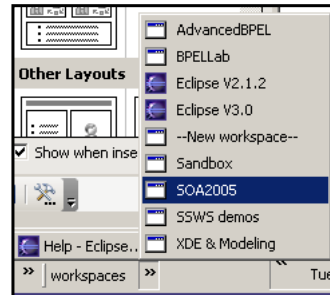
- You can also create different workspaces if you want.
 - Each workspace is a different directory that contains a set of projects.
 - To open Eclipse in a particular workspace, type
eclipse -data c:\workspace.
 - The easiest way to do this is by creating shortcuts on the desktop.

Different workspaces



Different workspaces

- You can create different shortcuts for different workspaces if you want:



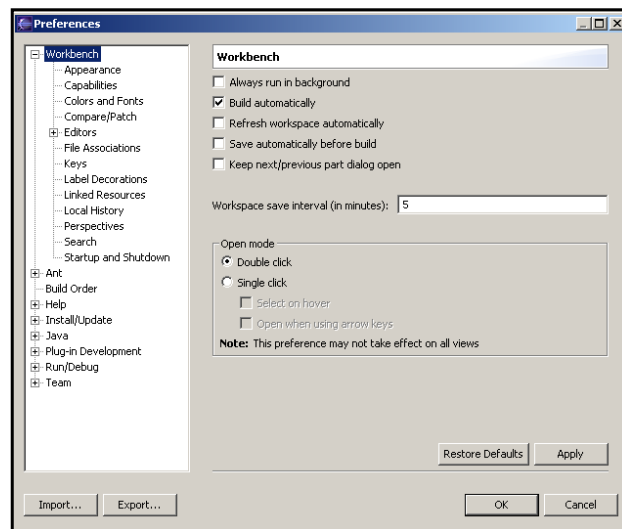
Performance tip

- If Eclipse runs slowly, try adding this switch to the command line or shortcut:
eclipse -vmargs -Xms256M
- This starts the Java virtual machine with 256MB of RAM.
- Eclipse loads most plug-ins only when you need them, but it can start to slow down if you use lots of tools.

Preferences

- Eclipse has a number of preferences you can set.
- Whenever you install a plug-in, that plug-in can have preferences also.
- As a result, your Eclipse installation can have literally hundreds of settings.
- Choose **Window→Preferences** to get to the Preferences dialog.

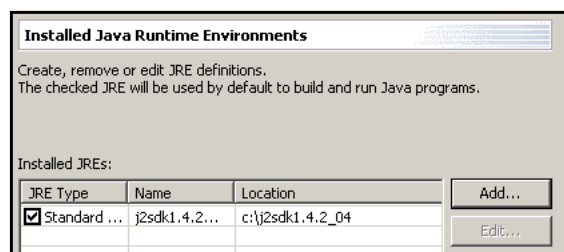
Preferences



Preferences

- You can change just about everything, including:
 - How the editor colors text
 - Which parts of Eclipse are loaded at startup
 - What tools are associated with what file types
 - How updates are processed (more on updates in a minute)
 - And many, many others

Preferences



- If you have more than one Java Runtime Environment installed on your machine, you can tell Eclipse which one to use.
- You can add new environments or change the default any time you want.

Updating Eclipse



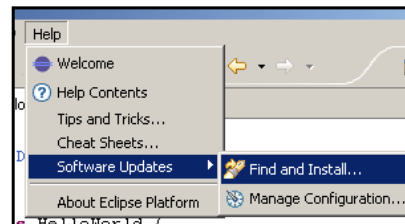
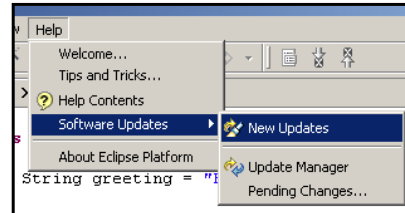
Updating Eclipse

- One of the many cool features of Eclipse is its ability to update itself with little or no effort on your part.
- You can ask Eclipse to install:
 - Updates to itself
 - Any plug-ins that Eclipse finds on your hard drive or on the Internet
 - Updates to any plug-ins you've already installed

Updating Eclipse

- To get started, choose **Help** → **Software Updates**.

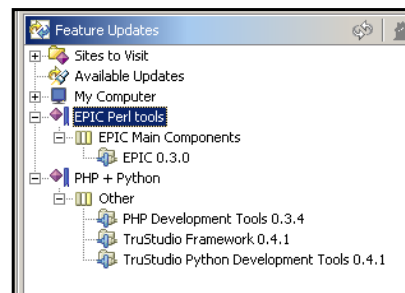
Eclipse 2.x



Eclipse 3.x

Current configuration

- You can view the current configuration to see what's currently installed.
- This is "Update Manager" in V2.x and "Manage Configuration..." in V3.x.



Adding plug-ins to Eclipse

- You can update Eclipse by installing plug-ins. Eclipse can install a plug-in from your hard drive or from the Internet.
- There are at least 500 Eclipse plug-ins on the Internet.
 - `eclipseplugincentral.com` and `eclipse-plugins.info` are the best places to find them.

Adding plug-ins to Eclipse

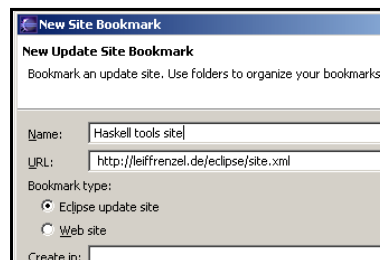
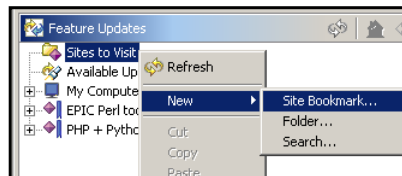
- The most primitive way to add a plug-in is to download and unzip a file containing a plug-in.
 - It works, but it requires the user to know how Eclipse is installed and configured.
- The next time you start Eclipse, the workbench tries to load the plug-in.
 - You can cancel the installation if something goes wrong.

Adding plug-ins to Eclipse

- The best way to get plug-ins is directly from the site that hosts the plug-in.
- Given a URL, the workbench looks for a file named **site.xml**.
 - That file lists the plug-ins available at the site, including the version of each plug-in and its requirements.

Adding plug-ins to Eclipse

- You can add a new site bookmark that points to the plug-in's URL.
- When you check for updates, Eclipse will look there for any new versions of the plug-in.



Dependencies

- Some plug-ins require other plug-ins.
 - For example, the Graphical Editing Framework and the Eclipse Modeling Framework are used by lots of plug-ins.
- When you try to install a plug-in, Eclipse checks to see if the required plug-ins are already installed.
 - If not, Eclipse will tell you (and possibly check the Internet for them).

Updating what's installed

- Eclipse knows what plug-ins are installed on your machine.
- If any of those plug-ins came from the Internet, Eclipse can visit the plug-in's site to see if there are any updates.

Review



eclipse

© 2004 IBM Corporation.

Review

- We covered how to install, run, and update Eclipse, including:
 - Where to find Eclipse (and a Java Runtime Environment if you need it)
 - How to create and use different workspaces
 - How to find and install plug-ins from the Internet